

An aerial view of a city with a blue and green color palette. The city is densely packed with buildings, interspersed with green spaces. Overlaid on the city are numerous hexagonal icons representing various sustainability and social development goals, such as renewable energy, education, health, and environmental protection. The overall atmosphere is clean and forward-looking.

Lpa

**Creating sustainable pathways
for a brighter *future***

About Us

We build partnerships

LPA was founded to address a market gap, offering cutting-edge lighting solutions that leverage the latest technology to minimise maintenance and energy usage, surpassing clients' expectations in aesthetics and functionality.

Now, with over 30 years of experience, our business has evolved to become an end-to-end energy design, implementation and optimisation service, providing proactive solutions for operational cost-savings. We operate globally in 90+ countries with a team of 150+ experts in lighting, technology, and engineering.

Our business addresses how companies consume, manage and report on energy, aligning with our commitment to sustainability.

Our extended suite of services positions us to combine emerging technology with creative design, creating partnerships across multiple industries with a determination to inspire a more sustainable future through collaboration with clients, staff, and suppliers.

Accreditations and Associations



Vision



To be recognised as a global leader in integrated solutions that inspire a more sustainable future.

Mission



Our mission is to create innovative solutions that make positive differences.

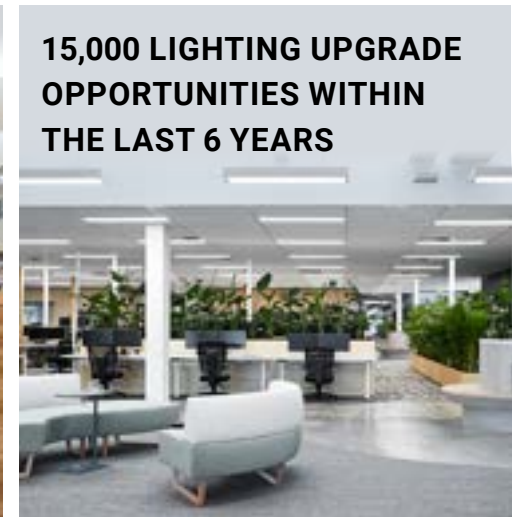
Purpose



We want to be part of creating a sustainable future. This is the reason we show up for work. This is the purpose behind our business endeavours.

About Us

As an **integration solutions** company, we offer industry-specific assistance to our customers – this is our commitment today and for the future.





We Make Complex
Problems **Simple**

Our Expertise

All our solutions are born out of the **nexus of our expertise** in lighting, hardware, engineering, and technology, underpinned by 30+ years of vast industry knowledge and experience.



Lighting



Hardware



Engineering



Technology

The background is a vibrant blue with a complex, glowing network of white and light blue lines. These lines form various geometric shapes, including circles, ellipses, and intersecting paths, suggesting a digital or data network. Scattered throughout the background are numerous small, semi-transparent icons. These icons include a smartphone, a laptop, a cloud, a gear, a magnifying glass, a location pin, a person, a house, a car, a bar chart, and a speech bubble. The overall aesthetic is futuristic and tech-oriented.

**We Design,
We Deliver,
We Manage**

Services

Our integrated solutions **create sustainable pathways** for our clients to reduce costs, improve efficiencies and increase revenue.

LIGHTING DESIGN & SUPPLY



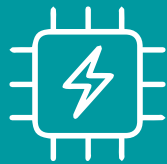
ENERGY MANAGEMENT (EMS)



UTILITIES & EMISSION MANAGEMENT



POWER MANAGEMENT



TENANT BILLING AUTOMATION



PARTNER PLATFORMS



Lighting

Illuminating design

We've been partnering with some of the world's leading brands delivering successful lighting projects across the retail, commercial, hospitality, healthcare, education and residential sectors for over 30 years.

From the simplest lighting supply project to a highly complex global roll-out program, design thinking is at the heart of every lighting solution we create.

We understand the impact of energy efficient lighting, often the best and fastest course of action in securing cost reduction whilst also improving light quality.

Our experienced team will work with you to create a customer-orientated lighting solutions package that gives the best possible results.



Data Management

We simplify data

We handle the collection of data and present it in a way that allows you to make data-driven decisions about your business. Improving operations, reducing manual errors, saving time, saving costs and driving sustainable business decisions in optimising energy usage and reducing emissions.

We excel in extracting data from complex business networks, seamlessly integrating with existing devices and intricate telemetry systems, to provide a comprehensive, and adaptable dashboard view of the entire portfolio. The result is real-time insights and accurate visibility into billing information.

The WideSky logo features a white upward-pointing arrow above the text "WideSky" in a white sans-serif font. The background of the entire slide is a dark blue, semi-transparent image of a person's hands typing on a laptop keyboard, overlaid with various digital data visualization elements like charts, graphs, and icons in a lighter blue color.

WideSky

We track, manage and report on emissions

Insights extracted from data offer a comprehensive view of energy usage, spending, emissions and ESG performance allowing for efficiency improvements. This process not only facilitates compliance with environmental regulations but also empowers data-driven decisions that drive company-wide initiatives to reach sustainability targets.



Energy Management

We achieve your energy goals

We offer a broad range of smart metering hardware that revolutionises traditional utility metering by incorporating advanced communication capabilities and sensors for real-time data collection on electricity, gas, or water consumption.

Using this data, we can implement demand-response programs, gain insights into resource utilisation, identify areas of excessive consumption and allow you to tailor your energy-saving efforts accordingly.

When integrated with our WideSky platform, we are able to provide efficient management of energy consumption, providing real-time data and insights to optimise usage and promote sustainable energy practices.

Our technology empowers our clients with accurate real-time information to make informed decisions, leading to potential cost savings.



Sustainability

Building sustainable pathways

In today's sustainable business landscape, data is a driving factor in environmental responsibility and operational efficiency. Smart meters and sensors, coupled with advanced analytics, empower companies to optimise energy consumption, identify inefficiencies, and strategically reduce their carbon footprint.

By analysing data, businesses can achieve dual benefits: enhanced sustainability and significant cost savings. With the increasing stringency of environmental regulations across the globe, data plays a crucial role in guaranteeing compliance, facilitating proactive reporting, mitigating legal risks and nurturing positive relationships with regulators and consumers.

At LPA, we want to be part of creating a sustainable future, for our clients and ourselves.

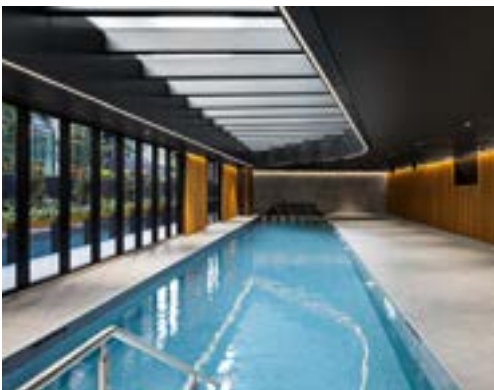
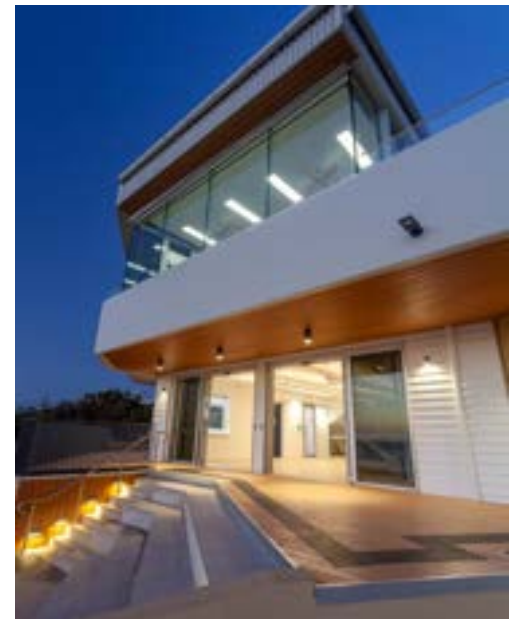
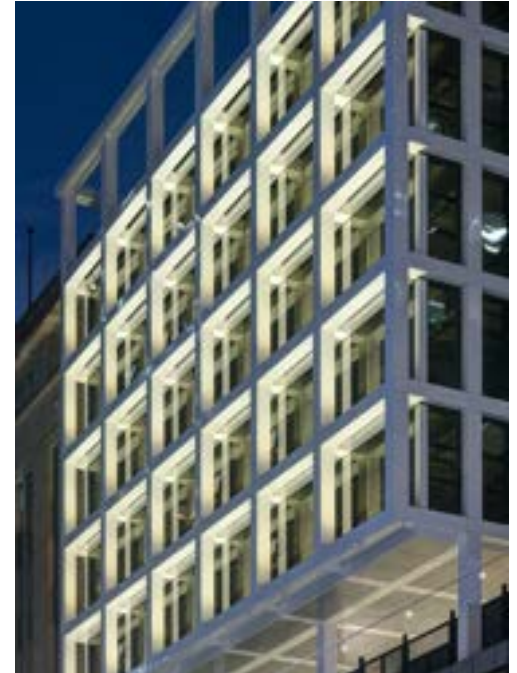
Contact one of our team members to understand how we can help you be part of the change.



Lighting Projects



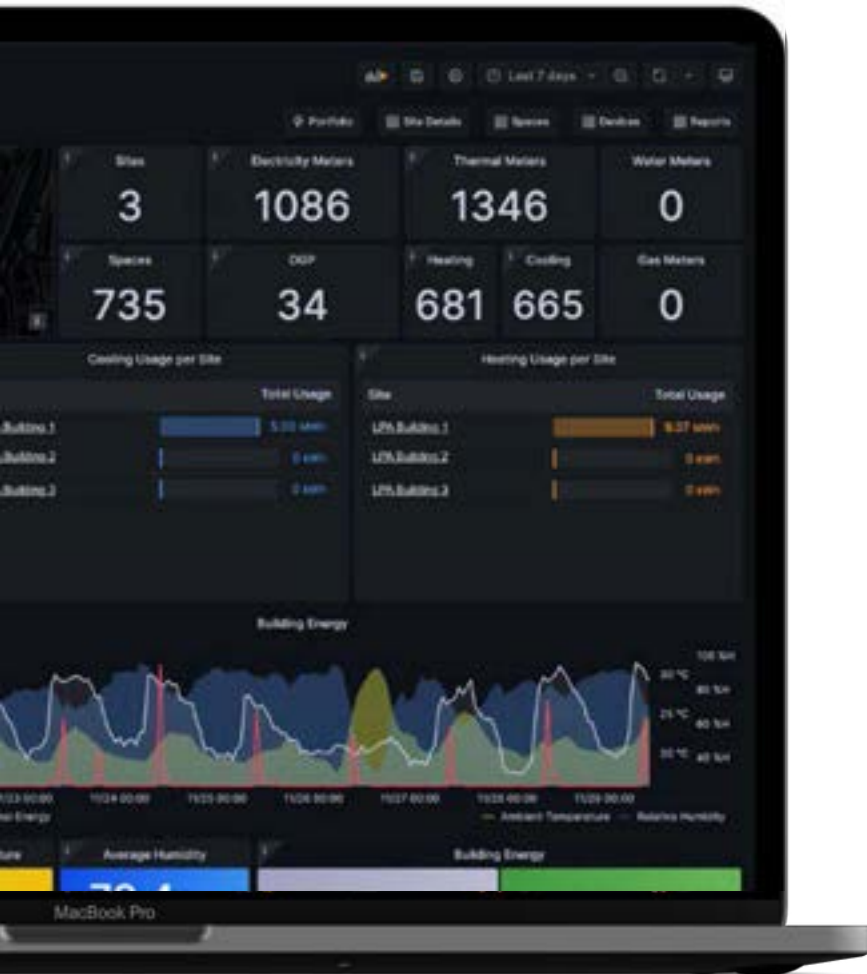
Lighting Projects



Hardware for Building Management



WideSky Dashboard Example



Customisable Dashboards

Each dashboard is configured with user-specific and goal-orientated features however is also customisable to meet each user's needs.

Simple to use

Easy navigation menus, date range selectors, filters for data comparisons, and colour schemes designed for straightforward alert and warning controls.

Multi-site simplicity

Dashboards are classified and structured to enable users to effortlessly navigate entire portfolios with a single click.

Our Clients & Partners

Some of the clients and partners we work with across the globe



Contact Us

We're here to revolutionize your business. Contact us today.

16A Palmer Parade
Cremorne VIC 3121
lpaenergygroup.com

Head Office

+61 3 8416 1500

Lighting

AU: salesau@lpalighting.com

AU: +61 3 8416 1500

US: +1 888-255-1828

UK: +44 1865 952 300

EMEA: +34 93 548 24 14

HK: +852 3955 0900

PRC: +86 757 8103 3078

SH: +86 21 5289 5308

WideSky

sales@widesky.cloud

AU: + 1300 194 337

US: + 8-888-88-WIDESKY

Engineering

accounts@vrt.com.au

+61 7 3535 9600

Metering

sales@cetameter.com

+61 7 3535 9600